

[illegible]

Update:

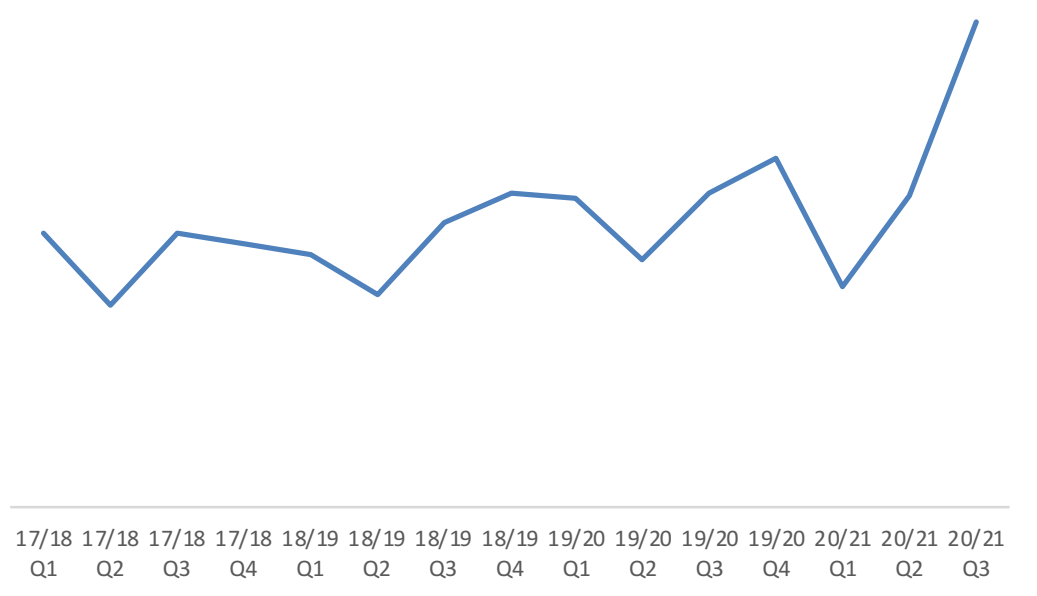
January 2021

CAMHS Tier 2 and 3

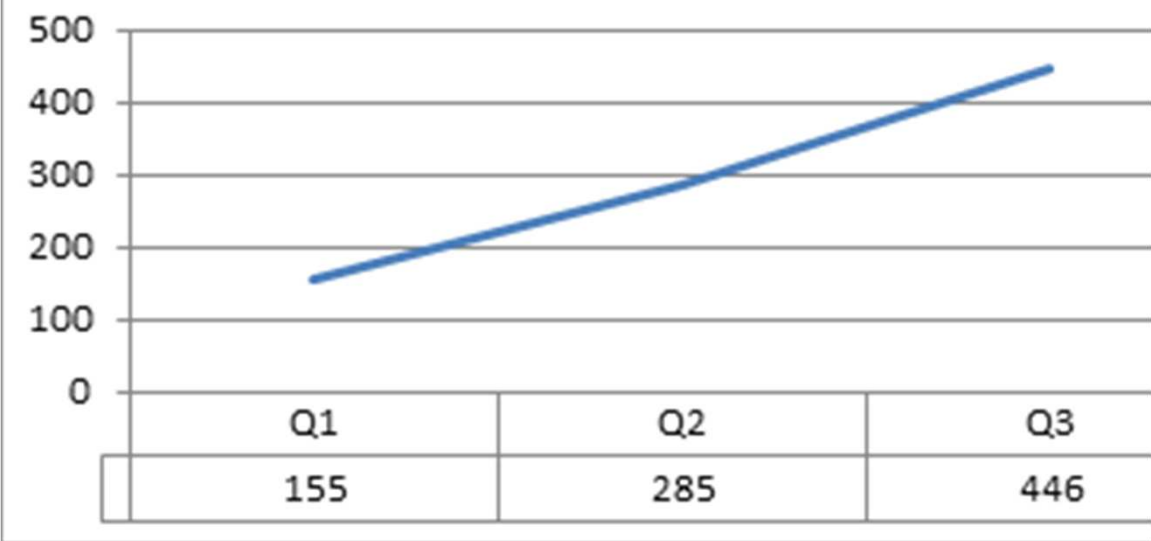
Tier 2 First Steps had a reduction in referrals over the first lockdown period but referrals have been significantly increasing since then and now back to normal levels for Q3. There are concerns however, that the referral trajectory for Q4 is abnormally high.

Tier 3 Specialist CAMHS have seen a significant surge in referrals for Q3 compared to previous years (almost double). Q4 also projected to be abnormally high. The service is under significant strain and we are at a critical point

ELFT Specialist CAMHS Referrals

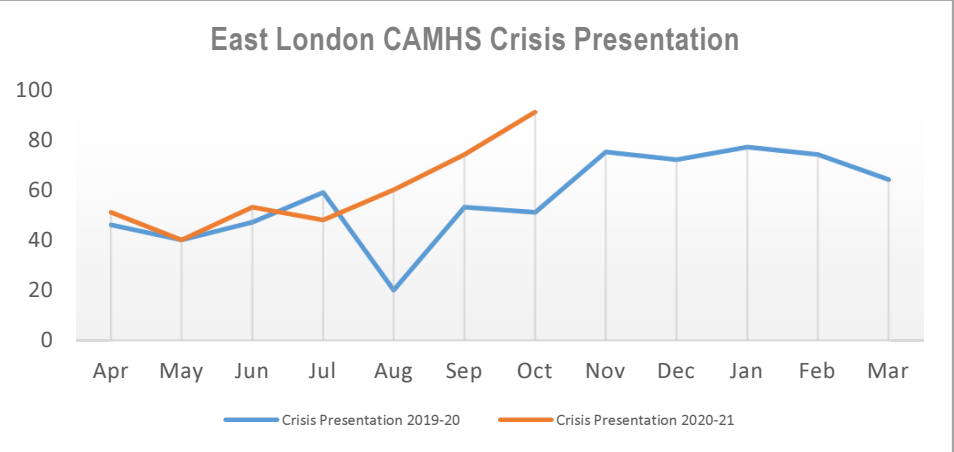
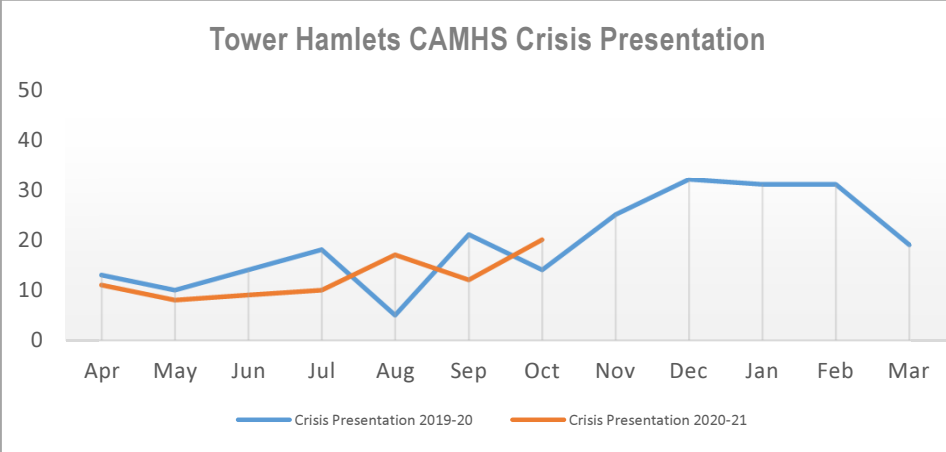
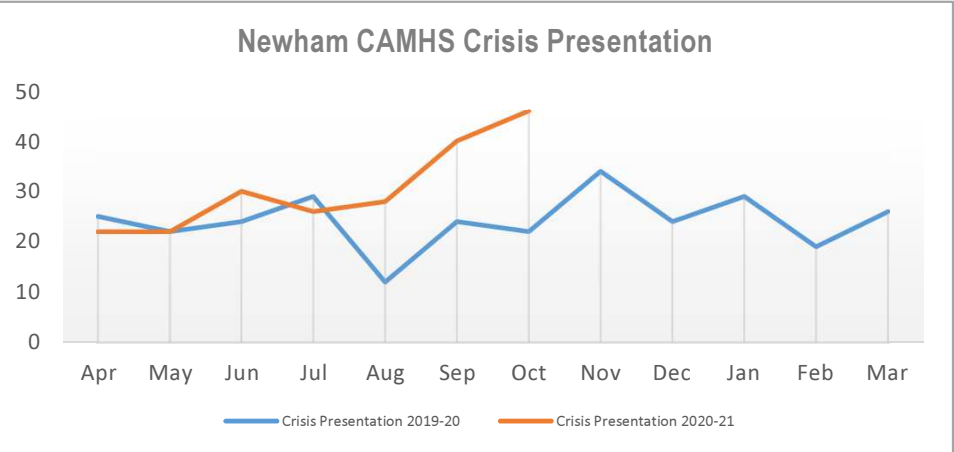
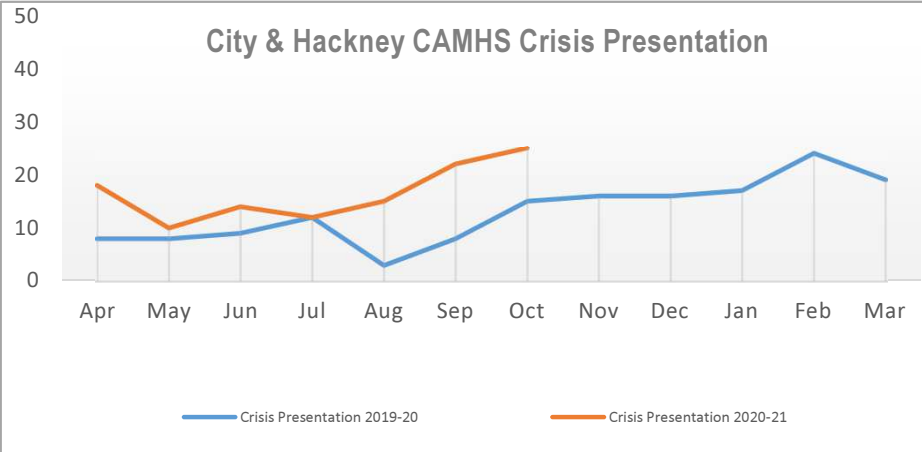


HUH First Steps Referrals



CAMHS Crisis Team

Significant increases in CAMHS Crisis presentation across inner North East London compared to previous year. Self Harm 30%; Social Problems 30%; 40% Depression, low mood/ Anxiety. There has also been a 50% increase in Eating Disorder presentations.



CAMHS Surge – Critical Response Plan

Redeployment of CAMHS Alliance Support to coordinate critical response - plan being finalised but will include e.g.

- 1) First Steps to see lower threshold cases that would normally go to ELFT e.g. low level self-harm
- 2) Expediate deployment of CAMHS Single Point of Access
- 3) Utilisation of MHST staff to support with core ops e.g. triage

HUH CAMHS to receive enhanced funding for additional senior clinician capacity plus enhanced duty system

Introducing enhanced LBH clinical offer to support surge in CAMHS crisis presentations that relate to social problems(e.g. LAC placement breakdowns).

Maintain Crisis service operation 9am -9pm 7 days per week beyond April 2021 and introduce additional cover up to midnight (in development)

Introduction of CAMHS Intensive Community Support Team (Tier 3.5) for CYP with highly complex needs preventing crisis presentations and unnecessary admission

Embedded LBH social worker to support crisis presentations

Introduction of Silvercloud online CYP IAPT treatment offer.

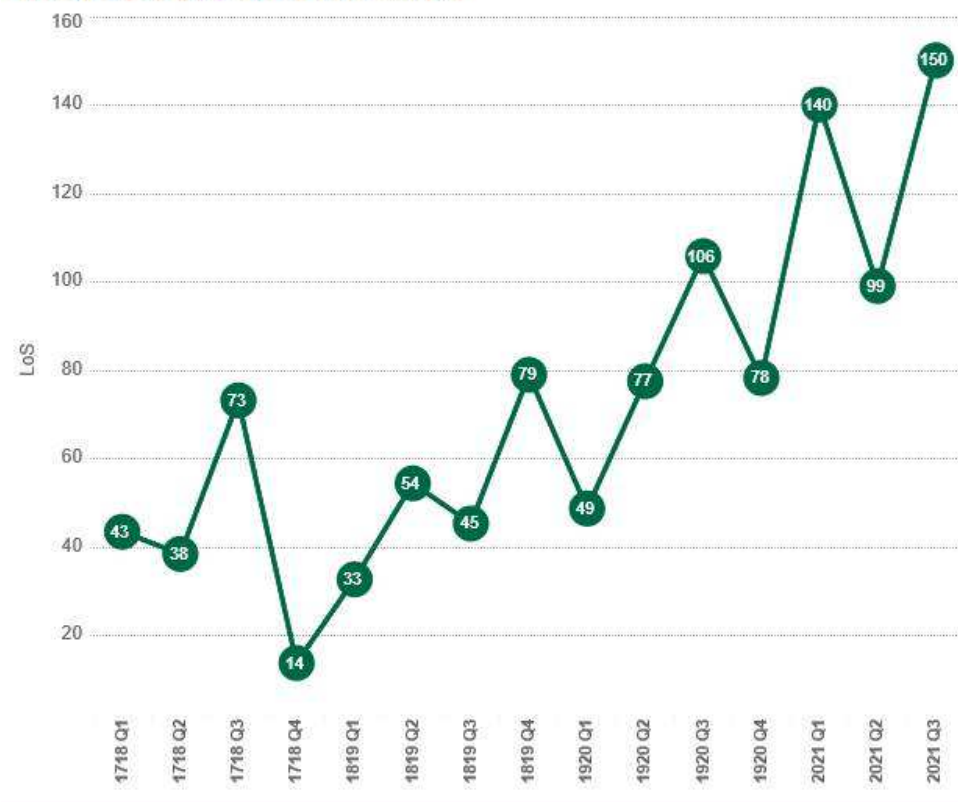
50% enhancement to clinical capacity at Off-Centre to improve pathway for 16-25 yrs. Working with HUH Adult IAPT to provide support for Young People on Off-Centre's waiting list.

Expanding existing Eating Disorders Service by 40% to cover increase demand / rapid deployment underway

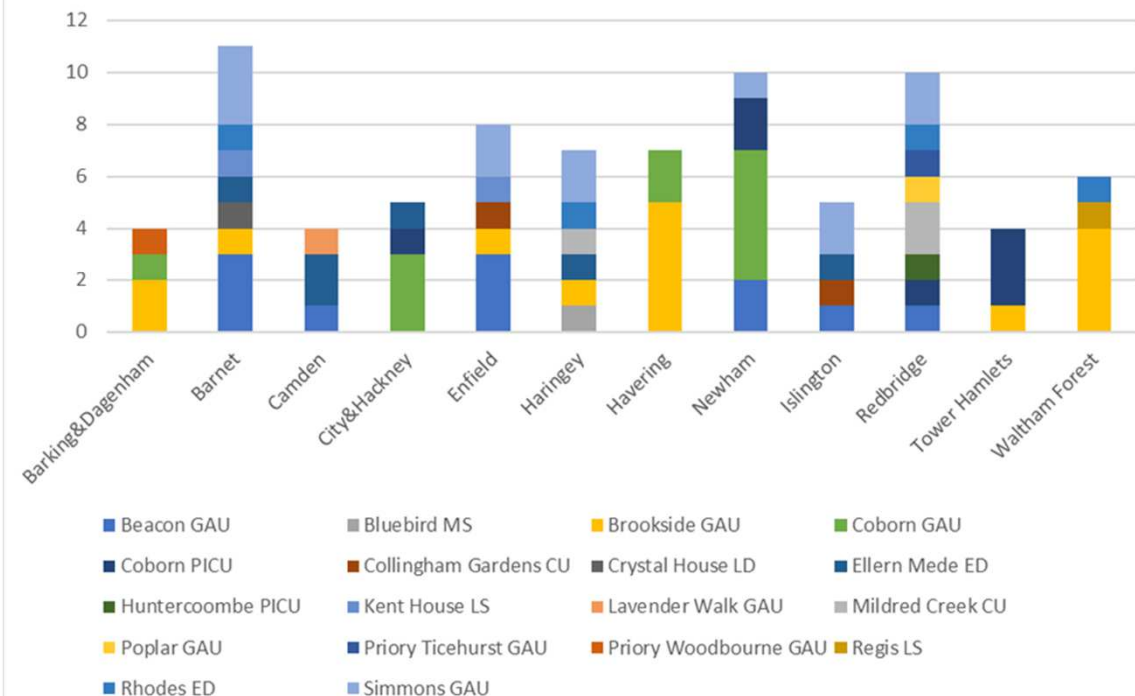
CAMHS Tier 4

Significant pressures on Tier 4 beds and paediatric units (*NEL activity currently remains within target*)
 Although there have not been any significant increases in admissions to tier 4, there has been a reduction in available beds due to covid restrictions, and a slowing down of flow, resulting in longer lengths of stay and less beds available for the usual number of admissions

Average LoS by Quarter of Discharge



NCEL Tier 4 Current Admissions by Borough and Unit as 14-01-21



CAMHS Tier 4 – Discharge and Flow Oversight Group

- Tier 4 no longer commissioned by NHSE but the responsibility of the NCEL Provider Collaborative (ELFT, HUHT, NCEL) to deliver care as close to home as possible
- Integrated Discharge Oversight Group established led by the Provider Collaborative with NEL CCGs and LAs (social care and education) - *applies to mental health and Transforming Care cohort*
- Remit to improve timely and effective discharge planning:
 - Notification of admissions and referrals to health, social care and education
 - Strengthen discharge planning from point of admission
 - CYP 'profiles' for placements to be jointly agreed with health to more accurately reflect needs
 - Reach agreement about tolerable levels of risk
 - Will inform development of wider step down strategy

Transforming Care: Care Education Treatment Reviews (CETRs)

- Separate dynamic support registers for Adults and CYP
- CYP with LD and / or autism with challenging behaviour and at risk of admission, threshold lowered in Covid (c.15 CYP)
- Regular multi agency review of the cohort and CETR meetings with Independent panel members, the family and all professionals are convened 3 monthly when at high risk of admission
- CAMHS are holding this caseload at a level above Tier 3
- Joint work with CAMHS, social care and education to explore commissioning of a 'Tier 3.5 service' which would require new ways of working across agencies to support this cohort in the community

Hackney Education update

- Attendance data :
 - CYP with Education Health and Care Plans (EHCPs)
 - Vulnerable pupils
- Duty to deliver provision
- Expectations for remote education
- SEND Recovery